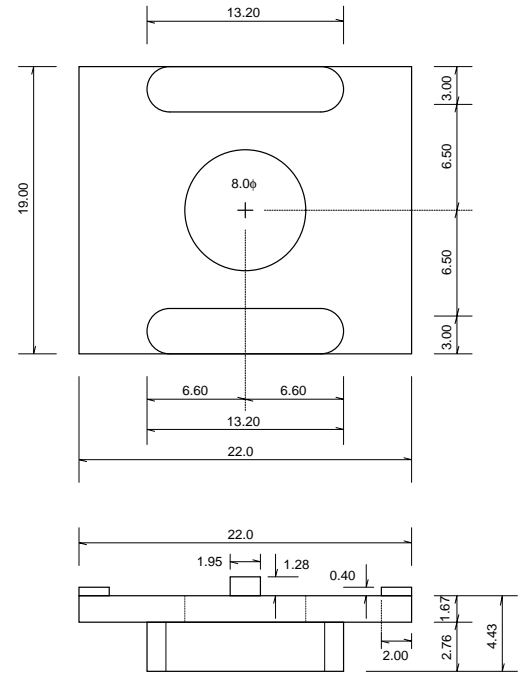
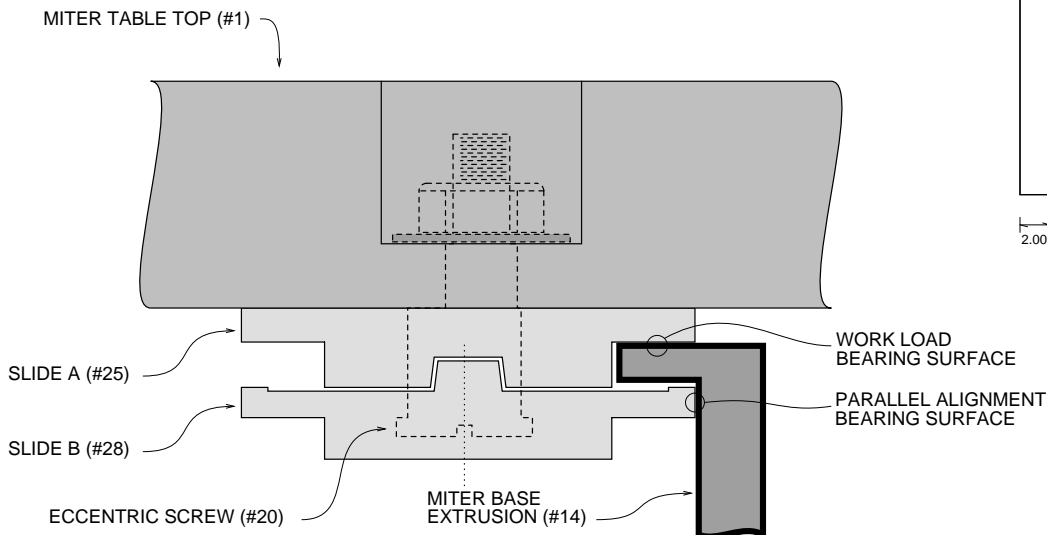


SLIDE A (#25)

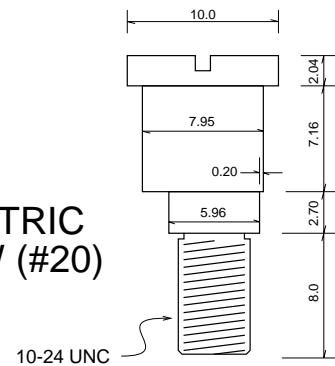


SLIDE B (#28)



SMT BEARING (NOT TO SCALE)

ECCENTRIC SCREW (#20)



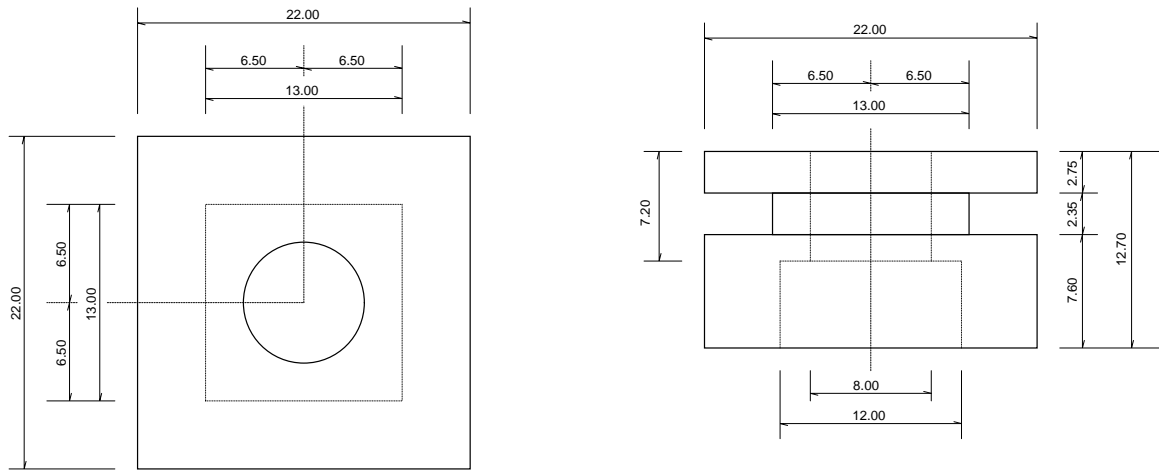
10-24 UNC

DISCLAIMER

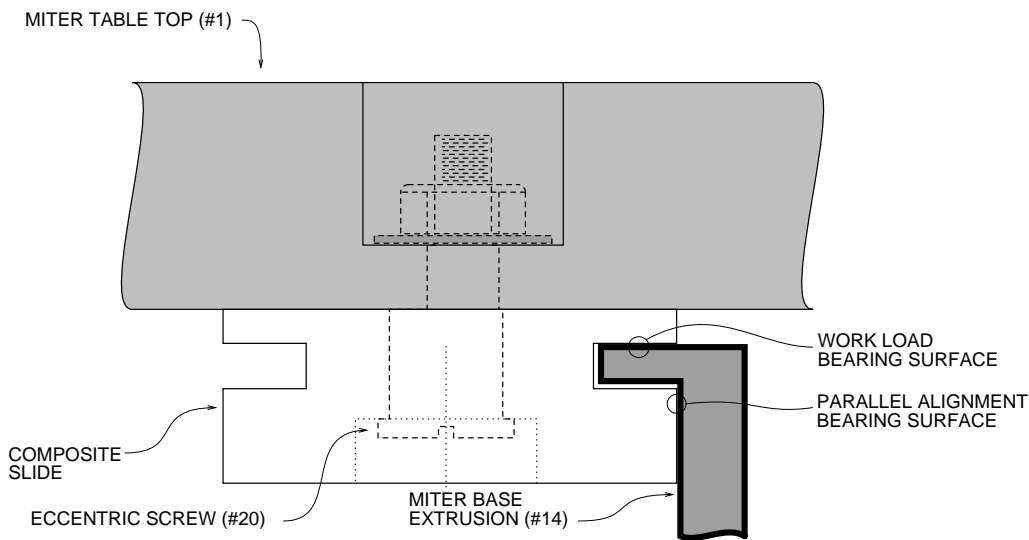
The data and information contained herein are intended strictly for educational purposes, and are provided as-is without warranty of any kind, express or implied, including conditions of merchantability or fitness for a particular purpose. No warranty is made, nor legal liability nor responsibility assumed for the accuracy, completeness, usefulness, or use of any data, information, apparatus, product, design, or process disclosed, nor representation made that use of said data and information would not infringe on privately owned rights. Specifically, any and all liability and risk resulting from use of said data and information is hereby assumed fully, completely, and solely by the user, including but not limited to special, indirect, consequential damages, or any damages whatsoever. By use of said data and information, the user understands and accepts the inherent risk accompanying any usage of any and all associated devices, including but not limited to repair, modification, experimentation, which can result in bodily injury, partial and/or total disability, paralysis and death. The data and information herein may contain technical inaccuracies or typographical errors. Changes and/or improvements may be made to said data and information at any time without notification. Said data and information contained herein may be wholly or in part the intellectual property of others. The user of said data and information assumes all responsibility and risk of complying with usage of such intellectual property, as mandated by laws and regulations in any and all jurisdictions of consequence.

RYOBI BT3000 SLIDING MITER TABLE ASSEMBLY PAGE 1 OF 2
REV 0.12

Design Capture, Documentation, Modifications Copyright (c)
2014-2015 Third Harmonic Ltd. All Rights Reserved.
Redistribution Strictly Prohibited. prototypes@third-harmonic.com

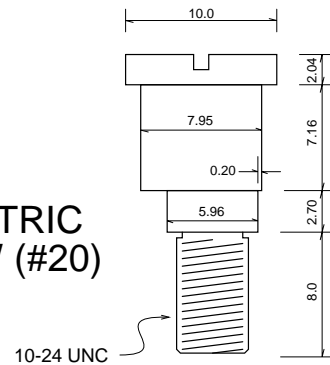


MONOLITHIC SLIDE MACHINED FROM 1" x 1" x 0.5" ACETAL BLOCK



MONOLITHIC SMT BEARING (NOT TO SCALE)

ECCENTRIC SCREW (#20)



DISCLAIMER

The data and information contained herein are intended strictly for educational purposes, and are provided as-is without warranty of any kind, express or implied, including conditions of merchantability or fitness for a particular purpose. No warranty is made, nor legal liability nor responsibility assumed for the accuracy, completeness, usefulness, or use of any data, information, apparatus, product, design, or process disclosed, nor representation made that use of said data and information would not infringe on privately owned rights. Specifically, any and all liability and risk resulting from use of said data and information is hereby assumed fully, completely, and solely by the user, including but not limited to special, indirect, consequential damages, or any damages whatsoever. By use of said data and information, the user understands and accepts the inherent risk accompanying any usage of any and all associated devices, including but not limited to repair, modification, experimentation, which can result in bodily injury, partial and/or total disability, paralysis and death. The data and information herein may contain technical inaccuracies or typographical errors. Changes and/or improvements may be made to said data and information at any time without notification. Said data and information contained herein may be wholly or in part the intellectual property of others. The user of said data and information assumes all responsibility and risk of complying with usage of such intellectual property, as mandated by laws and regulations in any and all jurisdictions of consequence.